

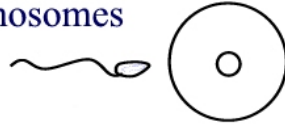
When Does Life Begin?

46 Chromosomes



23 Chromosomes

23 Chromosomes



$23+23 = 46 = \text{New Human}$

46 Chromosomes



Every human cell has 46 chromosomes except the sperm and the egg which have 23 each. At conception they become a unique human with 46.

cut here -----

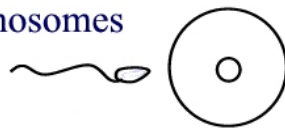
When Does Life Begin?

46 Chromosomes



23 Chromosomes

23 Chromosomes



$23+23 = 46 = \text{New Human}$

46 Chromosomes



Every human cell has 46 chromosomes except the sperm and the egg which have 23 each. At conception they become a unique human with 46.